

Parkheath

Sold on Service

Hilltop Road NW6

£2,700 PCM (£623 per week) - Camden Band E



748 sq ft / 69.49 sq m

First floor period conversion

Reception with high ceilings and wood flooring

Double glazed windows

Approx. 6 mins walk to West Hampstead Thameslink

Spacious two double bedroom apartment

Newly decorated throughout

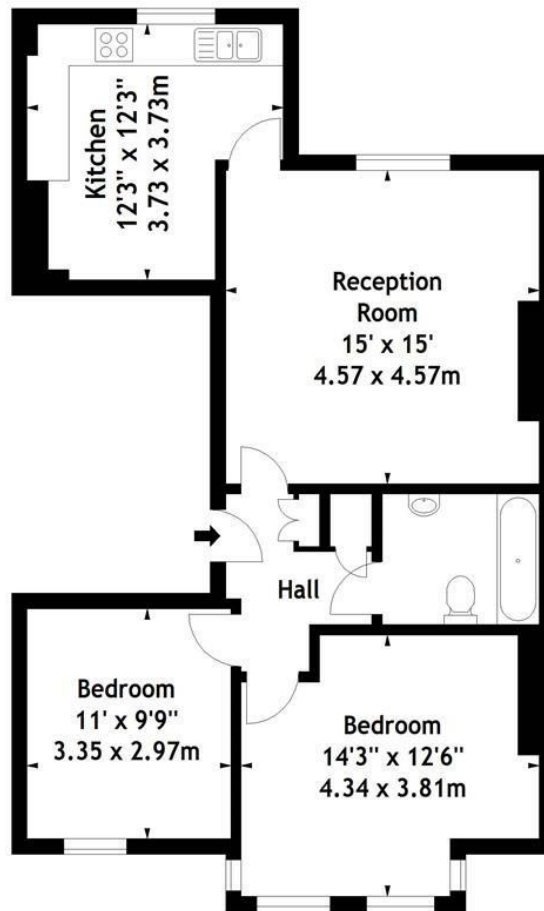
Newly fitted kitchen/diner

Approx. 4 mins walk to West Hampstead Underground

EPC: Rating C, Council Tax: Camden band E

West Hampstead Office 020 7794 7111

Hilltop Road, NW6
Approx. Gross Internal Area
748 Sq Ft - 69.49 Sq M



First Floor

Measured in accordance with RICS guidelines. Every attempt is made to ensure accuracy, however all measurements are approximate. This floor plan is for illustrative purposes only and is not to scale.

© Datography Ltd 2014
Photographs * Floorplans * Virtual Tours
Tel: 0845 643 4401 www.datography.com

The particulars do not constitute part of an offer or contract. The particulars, including text, photographs and plans, are for the guidance only of prospective purchasers/tenants and must not be relied upon as statements of fact. The descriptions provided therein represent the opinion of the author and whilst given in good faith should not be construed as statements of fact. Nothing in these particulars shall be deemed a statement that the property is in good condition or otherwise or that any services or facilities are in good working order. All measurements are approximate